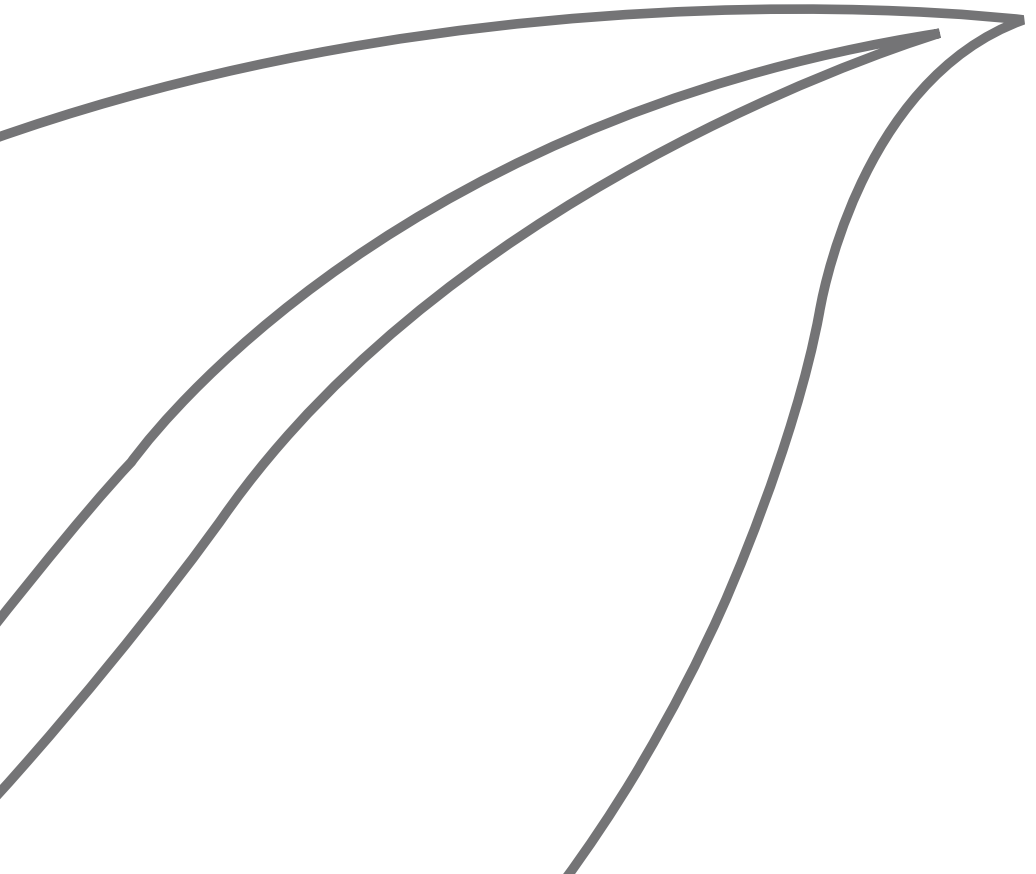


# PHYT'S



# A concentrate of Nature for more than 40 years

It all began in 1972 when John Paul Llopart, a biologist naturopath and Rosanne Verlé, a beautician, created Phytal, a brand of natural cosmetics. Revolutionary in his approach to beauty, which he advocated was inseparable from health, Mr. Llopart founded the basics of Naturo-Esthetique® and became a pioneer of natural cosmetics.

From the beginning, the entire product line was of natural origin and intended for the beauticians. Products such as the well-known anti-ageing Absolute Cream, the ultra soft exfoliating scrub Contact +, Serum C 17 with 17 active purifying ingredients were created then and became cult products of the brand.



Two years later, Mr. Llopart filed a patent because he had succeeded in packaging the creams, emulsions and other masks in glass vials. This original, innovative concept allowed him to ensure perfect hygiene due to the packaging sealing in the product and keeping out air. It also allowed him to provide the precise amount of product needed per treatment individual unit dose.

The brand proposed their product lines to its clients for sale, in order to prolong the benefits of professional care at home.



Integrated into the group Jérodià in 2004, the brand then took on a new dimension by becoming Phyt's and settling in Cahors, in the heart of the Lot. Thierry Logre, a biologist passionate about herbal and alternative medicine, took over the reins of the Brand with the desire to perpetuate the spirit and the difference of Phyt's. Everything then accelerated in terms of product innovation and international development, all the while emphasizing the origins and value of the brand.

## **Phyt's : 100 % Made in France**

It is in a setting of greenery and ancient stones, and surrounded by vineyards in the South-West of France that all the commercialized products are manufactured.

## **Phyt's : The quintessence of Nature at the service of your skin**

The determination for Natural formulas continues and everyday Phyt's Research develops new ingredients, as natural as they are efficient.

## **Phyt's : A history of Vial**

Providing professional care product in vials remains a Phyt's exclusive, which has forged the fame of the Brand. This has made it the leading natural cosmetics used in beauty salons.

## **Phyt's : A privileged partnership with Professionals**

43 years later, Phyt's continues on its path accompanying beauticians, suggesting treatments cares and targeted protocols, which are a combination of technology and efficiency.

Thoroughly trained in Phyt's Laboratories, the Naturo-Beautician will advise you of the best that nature has to offer with treatments in perfect harmony with your skin and with your wishes.

More than just a regulated way of doing things, Naturo-Esthetique® constitutes a philosophy of care, in union with nature and health, for your skin's delight...



# PHYT'S

NATURO-ESTHETIQUE



# With Phyt's experience BIO-ACTIVE COSMETICS

## **Naturalness**

Plant extracts, researched blends of essential oils, efficiency-proven phyto-complexes, highest quality plant oils and a whole host of natural ingredients, Nature abounds in all these beauty resources. For over 40 years, Phyt's has drawn on these valuable assets to offer your skin what Nature makes best, offering the quintessence of plants within a wide range of certified Organic cosmetics of natural origin.

## **Sensoriality**

At Phyt's, Beauty also rhymes with "pleasure to use". Whether it is an unctuous butter, an oily elixir intensely nourishing, an aqueous moisturizing serum that penetrates instantly, or a fine matifying emulsion, the many available textures adapt to the requirements of the epidermis: sometimes velvety for skin in need of comfort, sometimes light for skin in search of purity. As for the fragrances, floral, fruity, sweet or spicy, they awaken the senses and testify to their Natural origin.

## Efficiency

Strengthened by expertise and heritage, Phyt's Research continues to evolve and develop concentrated formulas that act upon the heart of beauty. Fully recognized by the body because of their natural origin, Phyt's care products are fully recognized by the body which reinforces their potency. Within each product line, extensive testing proves this alchemy between Science, Skin, and Nature.

And when the expert hands of the Phyt's Naturo-Beautician add their specific techniques to the quality of the applied products, the results are only more intensified.



# CLEANSING

A Prelude to Natural Beauty



CERTIFIÉ BIO  
MARQUE COSMÉTIQUE

MOUSSE  
FACIALE

Toutes Peaux  
*Facial Foaming Cleanser*



PHYT'S  
NATURO-ESTHÉTIQUE

100% ORIGINE NATURELLE

100 ml e 3.3 US



Because the skin plays a vital role as a protection against external aggressions, make-up removal and cleansing procedures are the first beauty steps to adopt.

Phyt's Laboratories offer a complete range of cleansing products, with varied textures and formulas, for the pleasure and needs of all skin types, so that this cleaning step is as natural as possible.

Awaken your skin delicately in the morning and offer it gentle relief in the evening with natural certified organic treasures. Treasures which will keep your skin clean and purified, ready to receive the precious active ingredients of the beauty products that will complete your daily skin ritual.

---

# MAKE-UP REMOVAL

---

## HUILE DÉMAQUILLANTE YEUX Eye Make-up Remover

*Oil-based*

Gently eliminates eye make-up, especially waterproof.

*Sunflower\*, Calendula\*, Myrtle\**



## LOTION DÉMAQUILLANTE YEUX Eye Make-up Remover Lotion

*Water-based*

This soothing lotion quickly dissolves resistant eye make-up. Suitable for the sensitive skin of the eye contour.

*Calendula\*, Myrtle\**

---

# CLEANSING

---

## LAIT HYDRO-NETTOYANT Water-soluble Cleansing Milk

*Ideal for combination to oily skins*

This fluid emulsion is smooth and easy to apply. The water soluble formula makes it possible to rinse off like soap. It removes make-up and impurities, leaving the skin feeling fresh and comfortable.

*Chamomile\*, Passion Flower\*, Ginseng\**

## LAIT NETTOYANT Gentle Cleansing Milk

*Without rinsing - Ideal for dry skins*

It gently and efficiently removes make-up and impurities without water. Skin is clean, supple and more comfortable.

*Hazelnut\*, Lemon\*, Verbena\**

## GEL PURETÉ VISAGE Foaming Gel Cleanser

*All skin types*

A cleansing foaming gel (surfactants from plants perfectly compatible with the skin) that delicately removes impurities.

*Rosemary\*, Hybrid Lavander\*, Geranium\**

## MOUSSE FACIALE Foaming Facial Cleanser

*Deep cleanser - Combination to oily skin*

Non-aggressive, this foaming lotion gently cleanses and eliminates impurities. Astringent, it purifies the skin and eliminates excess sebum for visibly clearer skin.

*Bilberry\*, Geranium\**

# T O N E



## HYDROLÉ EUCALYPTUS Eucalyptus Leaf Toner

*Toning lotion with fresh Plant extracts  
Combination to oily skin*

Purifying and revitalizing, this facial toner is recommended for combination to oily skin. It tightens, refines pores and helps to reduce inflammation from seborrhea. Essential to complete the cleansing process. Alcohol and glycerin free.

*Eucalyptus\*, Niaouli\*, Sage\*, Yarrow\**



## HYDROLÉ ORANGER Bitter Orange Leaf Toner

*Toning lotion with fresh Plant extracts  
Dry and sensitive skin*

Soothing and tonifying. Alcohol and glycerin free. Completes the cleansing process.

*Bitter Orange\*, Verbena\*, Mallow Lotus\**

\* Ingredients from organic farming

# E X F O L I A T E



## CONTACT + Gentle Exfoliator All skin types

This scrub that pills, gently eliminates surface dead cells without damaging the skin's natural protection. It helps to remove impurities, encourages oxygenation, leaving the skin radiant. Particularly recommended for dry skins.

*Plant-based cells, Ylang-Ylang\*, Cloves\**



## ACTIV'PEEL Scrub grains All skin types

This exfoliating gel with bamboo extracts cleans the skin from impurities. The skin is smooth, fresh and radiant. Particularly recommended for combination to oily skins.

*Bamboo extract\*, Geranium\*, Citrus\**

# DAILY CARE

A dab of gentleness



Exceptionally effective natural active ingredients, Hazelnut oil and natural Vitamin E, combined with an unctuously comfortable creams offer their benefits through a line of essential daily care products. In perfect harmony with the needs of all skin types, this product line will give your skin a wonderful, velvety feel.

Preserve the beauty of your skin, naturally !

## SOIN CONFORT DES LÈVRES

### Lips Care

*Beauty and lip protection*

Protects, softens and soothes even the most damaged lips. Its creamy and delicious texture preserves the youth and beauty of lips and brings softness and comfort.

Avocado\*, Argan\*, Shea Butter\*, Coconut\*, Natural Vitamin E



## SOIN MATIFIANT Mattifying Care

*Combination to oily skin*

Matifying daytime protection. Light, it is recommended for shiny skins (greasy). Matified and protected, the skin reveals its full radiance.

Natural vitamin E, Hazelnut\*, Patchouli\*, Marsh Mallow\*, Water Oak\*

## SOIN NUTRI-PROTECTEUR Nutri-Protective Care

*Dry and thin skins*

Its active ingredients help to restore the skin's protective film and reinforces the skin's protective barrier. The skin feels comfortable, soft and supple. Plus a delicate scent of Ylang.

Natural vitamin E, Hazelnut\*, Wheat Germ, Ylang-Ylang\*

## SOIN HYDRA-PROTECTEUR Hydra-Protective Care

*Normal skin*

With its fine and lightweight texture, this cream, fast absorbing, is perfect before applying make-up and protects the skin from dehydration. Skin appears even and radiant.

Natural vitamin E, Hazelnut\*, Petit Grain\*, Sandalwood

## SOIN RICHE PROTECTEUR Rich Protective Care

*Sensitive and very dry skin*

The skin is attacked by external factors and loses its reserves of lipids and water. It becomes irritated, sensitive and lacks suppleness. Soin Riche Protecteur helps to reinforce the cutaneous tissue's protective barrier by providing it with nutrition.

Natural vitamin E, Hazelnut\*, Shea\*, Sesame\*



## CRÈME CAPYL Cream Capyl

*Redness care cream*

This cream provides instant relief to skin with redness. It produces a real feeling of softness and comfort.

Centella\*, Red Vine\*, Horse Chestnut\*



DOUCEUR JOUR

DOUCEUR JOUR

BIO

SOIN HYDRA  
PROTECTEUR

Peaux normales  
Normal skin types

SOIN  
MATIFIANT

Peaux mixtes à grasses  
Combined to greasy skin types



PHYT'S  
NATURO-ESTHETIQUE

100% ORIGINE NATURELLE  
NET WT 1.4 US OZ.

BIO

SOIN NUTRI  
PROTECTEUR

Peaux sèches et fines  
and fine skin types

PHYT'S  
NATURO-ESTHETIQUE

100% ORIGINE NATURELLE  
NET WT 1.4 US OZ.

DOUCEUR JOUR

BIO

SOIN RICHE  
PROTECTEUR

Peaux délicates et très sèches  
and very dry skin types

PHYT'S  
NATURO-ESTHETIQUE

100% ORIGINE NATURELLE  
NET WT 1.4 US OZ.

# MOISTURIZING

The source of hydration





At any age, skin hydration is a necessary step of prevention and well-being. Each day the skin, whatever its type, is subjected to attacks that disrupt its natural mechanism of hydration. Through the synergic alliance of Hyaluronic Acid of plant origin, and other chosen plant oils, Aqua Phyt's is the effective answer to small inconvenience of the skin.

Discover the power of natural Hyaluronic Acid and let yourself be flooded by this delicious moisturizing ritual dedicated to all types of dehydrated skin...

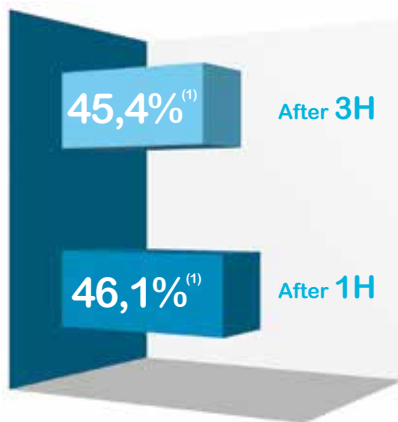
# CLEANSING

## EAU MICELLAIRE HYDRATANTE Hydrating Micellar Water

*All skin types*

With its soft and light texture, it removes make-up, tonifies and moisturizes the skin in one gesture. The skin is soft like velvet and ready to receive daily care treatments.

*Hyaluronic Acid, Hydrolate of Rose\*, Glycerol*



Percentage of moisturizing

(1) Clinical test performed on 10 women suffering from dry skins on their legs.



\* Ingredients from organic farming

# HYDRATE



## ÉLIXIR HYDRATANT Hydrating Elixir

*All skin types*

This elixir is the softest moisturizer ever. It leaves the skin soft and silky. Used in synergy with AQUA PHYT'S products, it is a real hydrating, additional which provides ultimate comfort to the most fragile skin.

*Hyaluronic Acid, Aloe Vera\*, Hazelnut vegetal oil\**

**+ 56%** hydration 1 h after application <sup>(2)</sup>

## FLUIDE HYDRATANT Hydrating Fluid

*Normal to combination skin*

A light and soft texture, delicately scented, that penetrates quickly and does not leave an oily film. The skin is refreshed, softer and hydrated.

*Hyaluronic Acid, Aloe Vera\*, Squalane from vegetal origin*

**+ 60%** hydration 3 h after application <sup>(2)</sup>



## CRÈME HYDRATANTE Hydrating Cream

*Dry skin*

A creamy texture especially adapted to daily hydration of dry skin. This cream provides an immediate sensation of comfort. The skin is refreshed, and supplied.

*Hyaluronic Acid, Aloe Vera\*, Jojoba\*, Squalane from vegetal origin*

**+ 64%** hydration 1 h after application <sup>(2)</sup>

(2) Clinical test performed on 10 women suffering from dry skins on their legs.

## CRÈME HYDRA RICHE

### Hydra Riche Cream

*Very dry skin*

An ultra rich and creamy texture that intensively hydrates and nourishes very dry skin and strengthens the skin's natural protective film. The skin is supple, soft, and recovers comfort and well being.

*Hyaluronic Acid, Sweet Almond\*, Beeswax\*, Shea Butter\**

**+ 62%** hydration 3 h after application <sup>(2)</sup>



## STRENGTHEN

## MASQUE HYDRA' GEL

### Hydra'Gel Mask

*All skin types*

Gel mask that leaves a fresh sensation instantly upon application. It offers a long lasting hydration to all skin types. The skin is hydrated, supple and soft.

*Hyaluronic Acid*

**+ 60%** hydration 3 h after application <sup>(2)</sup>



\* Ingredients from organic farming



## AQUA PHYT'S

*Food supplement*

Hyaluronic Acid  
Glycosaminoglycans

# REBALANCING

Bring back your skin  
to its natural condition



Rashes, excess sebum, shininess... Oily skin is often in search of balance and purity. To meet these expectations, Phyt's Laboratories has gathered active ingredients, natural purifiers and astringents, as respectful to the skin as they are effective: thyme, cypress, rosemary...



## CRÈME C17

### C17 Cream

*Equilibrating day care - Combination to oily skin*

Fluid and light, this day treatment purifies the skin. Imperfections are diminished and the pores are tightened for matified skin.

*Thyme\*, Lavender\*, Lemon\*, Clove\**

## Proven Efficiency

- Matified skin : **100 %**<sup>(3)</sup>
- Tightened pores : **100 %**<sup>(3)</sup>
- Diminished imperfections : **90 %**<sup>(3)</sup>

## NATURODERM

*Skin hygiene treatment*

Protective and cleansing solution. By stimulating the epidermis, it offers a purifying and drying action.

*Sage\*, St John's Wort\*, Centella\*, Clove\**



\* Ingredients from organic farming

## SÉRUM C17

*Equilibrating complex - Combination to oily skin*

Rebalances young, oily or blemish-prone skin. Its silky, fluid texture ensures it is quickly and evenly absorbed.

*Camphor, Rosemary\*, Lemon\*, Lavender\**

## MASQUE RÉVÉLATEUR

### Purifying Mask

*Combination to oily skin*

Purifying and balancing, this mask reinforces the balancing action of Serum C17.

*White Clay, Camphor, Thyme\*, Mint\**



(3) Clinical test performed on 20 women with greasy skin on their faces, applied twice a day for 28 days.

# OXYGENATING

From the heart of Nature springs brightness



Under external aggressions (stress, pollution ...), the skin's complexion becomes dull, asphyxiated and loses its healthy look. To bring back its energy, Laboratories Phyt's drew plant chlorophyll from the heart of Nature. Let yourself be seduced by the Reviderm range, a genuine breath of fresh air. The complexion is more radiant, the skin recovers freshness, force and vitality.

## CRÈME REVIDERM - Reviderm Cream

*Stimulating and oxygenating radiance day treatment*

This cream boosts the skin's radiance thanks to the synergy of Brown Seaweed, which stimulates oxygenation and cell energy synthesis, and extract of Pink Pepper which activates microcirculation. The skin feels less tired, energised and recharged.

*Plant-based Chlorophyll, Aloe Vera\*, Rosemary\*, Pink Pepper, Brown Seaweed*

### Proven efficiency

- Oxygenated skin : **95 %**<sup>(4)</sup>
- Revitalised skin : **95 %**<sup>(4)</sup>
- Energised skin : **95 %**<sup>(4)</sup>

## CONCENTRÉ REVIDERM - Reviderm Concentrate

*Radiance booster fluid*

Enriched with oxygenating active ingredients and cell renewing stimulants, this radiance concentrate is a real energy booster and breath of fresh air for dull, tired skin. Its precious Aloe Vera balls release their hydrating power for more radiant skin.

*Plant-based Chlorophyll, Aloe Vera\*, Seaweed, Plankton*



## SÉRUM REVIDERM

### Reviderm Serum

*Nourishing night care*

The chlorophyll of the essential oils oxygenates wakes up the skin. This night care breathes life back into skin that has lost its shine or been damaged by pollution, preventing early signs of aging thanks to its nourishing active ingredients.

*Wheat Germ, Basil\*, Sage\**

\* Ingredients from organic farming

## MASQUE REVIDERM

### Reviderm Mask

*Instant radiance face mask*

This mask features a refreshing fragrance and texture and treats skin to a beauty quick fix. It revives instantly dull skins. Skin is left revitalised and radiant. The complexion is refreshed and glowing. Instant radiance guaranteed !

*Plantbased Chlorophyll, Aloe Vera\*, Watercress\*, Avocado\**



(4) Satisfaction test performed on 20 women aged 25 to 45 years, with all types of skin, dull, devitalized by dullness or stressed in the face. Application 2 times per day during 21 days.

# AROMALLIANCE

Tame the time course, naturally





Skin aging is a complex cellular mechanism, depending on internal factors (a natural, irreversible process) and external (UV rays, pollution, tobacco ...). Thus, with age, skin changes, loses its natural moisture and its fundamental elements become depleted.

To diminish these changes, Phyt's offers a wide range of products adapted to the needs of mature skin. Challenge Time and preserve your youthfulness.

## CRÈME ABSOLUE

### Cream Absolue

*Firming anti-wrinkle cream*

A genuine rejuvenation treatment, this rich cream reduces wrinkles and firms the skin. Its delicious texture enables it to offer its many anti-ageing virtues to all mature skin types.

*Wheat Germ, Hazelnut\*, Lemon\*, Sage\*, Cypress\*/Rosemary\*/Thyme\*, Vitamin E*

### Proven efficiency

- - **20 %** reduction of wrinkles<sup>(5)</sup>
- The skin is regenerated up to **76 %**<sup>(6)</sup>
- Up to **81 %** smoothness <sup>(6)</sup>



\* Ingredients from organic farming

## SÉRUM ANTI-RIDES

### Anti-Wrinkle Serum

*Nourishes - Smooths*

This highly nutritional oily phytocomplex, rich in nourishing vegetable oils and regenerating essential oils, shows its full strength on wrinkles and slack skin. It reduces the number, surface area and length of wrinkles for smooth and visibly younger skin.

*Wheat Germ, Hazelnut\*, Vitamin E*



### Proven efficiency

- - **37 %** reduction of the total surface area of wrinkles<sup>(7)</sup>  
(Evolution of the total surface area of wrinkles 28 days after daily use)
- - **24 %** reduction in the number of wrinkles<sup>(7)</sup>  
(Evolution of the number of wrinkles 28 days after daily use)

(5) Clinical test - Macroscopic measurement of the cutaneous micro-relief with imprints taken prior to use and 28 days after daily use on 20 women. (6) Satisfaction test - Study conducted on 20 women from 45 to 70 years old by self-assessment questionnaire collected 28 days later, two applications per day, morning and evening on the face. (7) Clinical test - Macroscopic measurement of the cutaneous micro-relief with imprints taken prior to use and 28 days after daily use of the anti-wrinkle serum on 20 women.



## CRÈME PHYTONAGRE

### Cream Phytonagre

*Nutrition care - Anti-ageing balance*

Rich in Evening Primrose and Borage vegetable oils, this cream helps skin lacking in vital elements to regain vitality and suppleness. It helps to reduce certain skin effects linked to hormonal imbalances. Anti-oxidant vitamin E and anti-ageing Soya vegetable oil offer a genuine protective action.

*Evening Primrose\*, Borage\*, Soya\*, Sage\*, Vanilla, Vitamin E*

## CRÈME RICHE NUIT

### Rich Night Cream

*Anti-Ageing*

Its rich and creamy texture works throughout the night and diffuses its active ingredients to nourish and regenerate. When you wake up, the skin is rejuvenated, ready to face a new day!

*Hazelnut\*, Patchouli\*, Ylang Ylang\*, Shea Butter\*, Beeswax\*, Vitamin E*



## FLUIDE CONTOURS

### Contour Fluid

*Anti-Wrinkle Lip And Eye*

Specially created for the delicate eye and lip areas, this anti-ageing fluid smoothes and reduces wrinkles and fine lines for brighter eyes and a radiant smile.

*Potassium, Silica, Wheat Germ, Cypress\*, Chamomile, Beeswax\*, Vitamin E*

## Proven efficiency

**- 17 %** reduction of wrinkles<sup>(8)</sup>

(8) Clinical test - Evaluation of the parameters of the skin by image analysis of imprints before use and then 28 days after twice daily application microrelief on 20 women.

# SÉRUM MULTI-VITA

## Anti-Ageing Tensor

This aqueous anti-ageing serum is an instant firming treatment. It contains a cocktail of multivitamin and precious ingredients, in which the Cévélblé®. It tightens the features for firmer and youthfully radiant skin.

Carrot beta-carotene, Yeast, Acerola\*, Vitamin E, Lemon\*, Gentian\*

# CONCENTRÉ ANTI-TACHES

## Concentrate Anti-Marks

### Anti-Ageing Concealer

This local treatment targets age spots.

PWE® Complex, Wheat Germ, Acerola\*

# MASQUE NUTRI-CONFORT

## Nutri-Comfort mask

### Anti-Ageing

This cream mask with anti-ageing properties and a refreshing texture improves the appearance of devitalised skin. It immerses the skin in softness. Signs of tiredness disappear and the skin is rejuvenated. To associate with the Aromalliance Anti-Ageing range.

Hazelnut\*, Cypress\*, Lavender\*, Clove\*, Vitamin E



\* Ingredients from organic farming



# FERMETÉ ANTI-ÂGE

## Firming Anti-Aging

### Food supplement

Vitamin E contributes to protecting cells from oxidative stress.

Extract of marine collagen

Glycosaminoglycans

Natural Vitamin E

# WHITE BIO-ACTIVE

And your skin glows...



WHITE BIO-ACTIVE

CRÈME  
DE JOUR

Éclaircit, Unifie, Protège  
Lightens up, Unifies, Protects

PHYT'S

NATURO-ESTHÉTIQUE

100% ORIGINE NATURELLE

40g NET W 1.4 OZ

Over time under repeated sun exposure, hormonal disorders, cutaneous aging, or even reactions to irritation or inflammation, the skin weakens. It becomes dull. Only targeted treatments are able to respond to this pigment problem.

This is why Phyt's draws out the best of the active ingredients that are present in the White Bio-Active line to restore skin's original glow. Formulated around the PWE® complex, a phytoactive with an overall effectiveness proven on melanogenesis.

Discover the complete range, which reveals the effectiveness of this phyto-complex, a synergy of plant extracts and essential oils : extracts of organic Bearberry and Liquorice, organic essential oils of Yarrow, Parsley, Carrot, Celery, Wintergreen, Basil, Wood Ho and Acerola.

## LOTION

### Toning - Cleanser

*Evens, cleans*

First step of the White Bio-Active range, this fresh and light lotion cleanses, tones, and prepares the skin to receive White Bio-Active lightening Day and Night Cares.

PWE® Complex, Acerola\*, Aloe Vera\*



## CRÈME DE JOUR

### Lightening Day Care

*Evens, Protects*

Soft and delicate, this day treatment offers skin the exceptional benefits of the PWE complex. The number of brown spots appears diminished. The skin is protected and regains its natural radiance.

*Must be associated with CREME DE NUIT.*

*PWE® Complex, Soya\*, Wheat Germ, Acerola\**

## CRÈME DE NUIT

### Lightening Night Care

*Evens, Nourishes*

Nourishing night treatment with the PWE phytoactive complex to even and enhance. The complexion is smooth.

*Must be associated with CREME DE JOUR.*

*PWE® Complex, Acerola\*, Sunflower oil\*, Wheat Germ*

The skin is radiant by

**81%**<sup>(9)</sup>



## GOMMAGE

### Exfoliating Care

#### *Exfoliates*

This scrub eliminates every single dead cell that dulls the skin. Skin imperfections are reduced. Skin is smoother and more clarified.

To use in addition of the White Bio Active lightening Day and Night Cares.

PWE® Complex, Plant-based cells, Aloe Vera\*, Acerola\*

## MASQUE

### Radiance Restoration

#### *Evens, Smoothes*

Essential complement for White Bio-Active Day and Night Creams, this cream mask offers radiance to the skin. The complexion is more even.

Skin is purified and cleared.

PWE® Complex, Clay, Acerola\*, Wheat Germ

\* Ingredients from organic farming  
(9) Test performed on WHITE BIO ACTIVE Lightening Day Care, on 20 asiatic women, aged 23-58, by chronameter and self evaluation gathered after 56 days. 2 daily applications morning and evening on the face.



# PHYT'SUBLIM EYES

Re-energise your eyes in  
the blink of an eye !





Very rich in natural active ingredients, Phyt'Sublim Eyes offers global care to the eye contour. Signs of fatigue fade away, the eye area is smoother and hydration restored, the skin on the eye contour is protected, energized and the youthful appearance is preserved. Try Phyt'Sublim Eyes, a tailor-made range of products. It's worth a look !

## PROVEN EFFICIENCY<sup>(10)</sup> PUFFINESS AND DARK CIRCLES

### SÉRUM DÉFROISSANT YEUX

#### Eyes Smoothing Serum

*Instant tensing effect, anti-puffiness, anti-dark circles*

An instant tensing effect, combined with a silicon-potassium synergy and a high concentration of Phyto-Actif Regard Complex help invigorate and smooth the eye contour : bags are diminished, wrinkles are smoothed, eyelids are less puffy. The eye contour is drained, rested and energised.

*Silicon, Hyaluronic Acid, Potassium, Natural active tensor from Acacia Gum, Phyto-Actif Regard complex*



### SOIN DÉFATIGANT YEUX

#### Eyes re-energising care

*Anti-puffiness, anti-dark circles, hydrating*

Rich in Phyto-Actif Regard complex, highly concentrated in Hyaluronic Acid, light and creamy textured, has an effect on the various signs of fatigue and stress on the eye contour. Puffiness and dark circles are reduced, wrinkles are smoothed, the skin is hydrated.

*Hyaluronic Acid, Aloe Vera\*, Hydrating active ingredient from Wheat, Avocado\*, Phyto-Actif Regard complex*



### MASQUE RAFRAÎCHISSANT

#### Eyes refreshing mask

*Smoothing, toning*

A refreshing, relaxing, toning mask for eye contour with a combination of Phyto-Actif Regard complex, Organic Aloe Vera and Potassium.

*Potassium, Aloe Vera\*, Phyto-Actif Regard complex*

\* Ingredients from organic farming

(10) Satisfaction Test - Study involving on Phyto-Actif Regard Complex on 22 women aged 18 to 50 through a self-evaluation questionnaire on a 28-day period, 2 daily applications, morning and evening on eye contour

# PHYT'SSIMA

Ultimate comfort for dry skin



Lacking hydration and lipids, dry skin pulls, tingles, weakens and becomes more and more over-reactive. To pamper these overly sensitive skins, Phyt's Laboratories has designed body and facial treatments, wonderfully comfortable "friends" for dry skin.

At the heart of Phyt'ssima range, two exceptionally active plants work wonders : Hemp oil and Argan oil. Intensely nourishing, their incomparable richness in fatty-acid essentials gives them unmatched nutritional and restorative properties.

Enjoy the comfort of this range, which works in perfect harmony with the skin.

## PAIN SURGRAS

### Dermatological Bar

*Comfort for dry skin*

Enriched with nourishing argan oil and shea butter, this bar respects dry skin, and cleans without drying.

*Argan\**, *Shea Butter\**





## SOIN VISAGE

### Face Care

*Nourishes - Relipidates*

Repairing and protecting care that soothes very dry skin. It nourishes and relieves itchiness and redness resulting from skin dryness and lastingly eliminates feelings of tightness and discomfort.

Hemp\*, Argan\*, Natural Vitamin E, Shea Butter\*

## SÉRUM NUTRITIF

### Nourishing Serum

*Repairs - Nourishes*

Soothes dry to very dry skin types. This night care nourishes and eliminates feelings of tightness and discomfort, even in conditions of extreme cold.

Hemp\*, Argan\*, Natural Vitamin E

## MASQUE DOUCEUR

### Repairing Mask

*Nourishes - Protects*

Suitable for dry skin types. Argan and hemp oils, rich in Omega 3 and 6 leave the skin nourished, soothed and protected.

Hemp\*, Argan\*, Hybrid Lavender\*

## STICK À LÈVRES

### Nourishing Lipstick

*Soothes - Nourishes*

Real complex of nourishing and antioxidant ingredients, it helps preventing lips from dehydration. Delicately perfumed with coconut notes, it leaves your lips comfortable and soothed.

Argan\*, Coco Butter\*, Shea Butter\*



## CRÈME DE DOUCHE

### Shower Cream

*Soap-free comfort cleanser  
Formulated with 72 % Nourishing Cream*

Enriched with nourishing cream, soap-free, it gently cleans and leaves the skin comfortable.

Argan\*, Hemp\*, Shea Butter\*, Natural Vitamin E

## SOIN CORPS

### Nourishing Body Care

*Emollient - Nourishing*

It nourishes and soothes very dry skin. Calms the irritations of the driest skin.

Argan\*, Hemp\*, Shea Butter\*, Natural Vitamin E, Hybrid Lavender\*



\* Ingredients from organic farming



## ZONES REBELLES

### Repairing care

*Fissures - Cracks*

Protective and restorative, it soothes itchiness, redness, irritations and cracks for structurally very dry skin, or skin under attack from the cold and day-to-day work, etc.

Argan\*, Hemp\*, Shea Butter\*, Natural Vitamin E



## PHYT'SSIMA

### Food supplement

Rich in essential fatty acids : Oméga 3 and 6

Evening primrose oil

Natural Vitamin E



# BODY PROTECTORS

To each his own gentleness



To clean your skin, to hydrate it, to nourish it, to protect it... so many ordinary habits but which are essential to well-being. And what if these rituals that seem so natural to you were to become reality thanks to PHYT'S ?

Succumb to the ultra softness of Body Care, respectful and protective, which combine health, pleasure and absolute naturalness.

# C L E A N

## GEL NETTOYANT MAINS

### Cleansing Gel

#### *Hand hygiene*

This gel gently cleanses. Its ingredients respect the skin.

*Tea Tree\*, Palmarosa\**



## GOMMAGE CORPOREL

### Body Exfoliator

#### *Scrub gently*

Cleansing foam body gel for a gentle scrub with apricot kernel powder. The skin is soft and silky.

*Apricot Pit powder, Orange\**



## GEL DOUCEUR INTIME

### Intimate Cleansing Gel

#### *Intimate hygiene*

This gel gently cleanses and leaves a sensation of freshness. Its physiological pH allows it to respect the balance of the intimate flora and protect all mucosa.

*Calendula\*, Tea Tree\**

# N O U R I S H

## DOUCEUR FLEURIE

### Gentle Flowers

*Jasmine scented moisturizing milk*

Hydrates and envelops your body in its floral notes. It penetrates quickly because of its light texture.

Hazelnut\*, Plant glycerine

**+ 53%** hydration 1 h after application<sup>(11)</sup>

## VELOURS CANNELLE

### Cinnamon Velvet

*Moisturiser spicy scent*

With the smoothness of its texture and scent of warm cinnamon, it envelops the body gently.

Hazelnut\*, Cinnamon\*

**+ 87%** hydration 3 h after application<sup>(11)</sup>

## CRÈME CORPS NOURRISSANTE

### Body Cream

*Rich Care*

This silky and spicy Cinnamon scented cream, is enriched with vitaminized virgin oils. It perfectly nourishes and protects the skin.

Shea Butter\*, Sesame\*, Cinnamon\*



# P R E S E R V E

## DÉODORANT FRAÎCHEUR THÉ VERT

### Deodorant Fresh Green Tea

*Deodorant Roll On*

Neutralises odors, refreshes thanks to the green tea scent and respects the skin. DÉODORANT FRAÎCHEUR THÉ VERT doesn't disrupt the physiological process of perspiration because it doesn't contain aluminium salts.

Active deodorant ingredient of natural origin obtained by fermentation of Corn starch, Mallow\*, Aloe Vera\*



## DÉOPHYT'S

*Fresh deodorant spray*

Without aluminium salts, it deodorises and respects the skin.

Aloe Vera\*, Tea Tree\*, Mandarin\*, Pine\*

## POST-ÉPIL Gentle protective

*Care post depilation*

Dermoprotector, it respects your skin, calms, cleanses and refreshes.

Mint\*, Lavender\*



(11) Clinical test performed on 10 women suffering from dry skins on their legs.





# P A M P E R

## CRÈME MAINS & ONGLES

Hands and Nails Cream

*Nourishing - Protective*

Thanks to its organic active ingredients, it softens and nourishes the hands. Ideal to protect dry and damaged hands...

*Natural Vitamin E, Patchouli\*, Lemon\*, Sandalwood, Silicon*

## HUILE ONGLES & CUTICULES

Nails and Cuticles Oil

*Tonic - Nourishing*

Softens the cuticles and nourishes the nails. Perfect for strengthening and protecting weak and brittle nails.

*Castor\*, Apricot pit\*, Myrte\*, Lemon\**

## SOIN PIEDS NUTRI-RÉPARATEUR

Foot Cream

*Nourishing - Protective*

Rich in nourishing and softening virgin oils, this cream offers nutrition, suppleness and elasticity.

*Beeswax, Shea Butter\*, Mini\*, Argan oil\**

# SLIMMING BIO-ACTIVE

Experiment the efficiency of the nature



Exfoliating Bamboo Marrow, slimming Caffeine, firming Papaya, refining Pink Pepper, tonifying Coralline Seaweed, energizing Almond hulls... Phyt's Laboratories have created the Slimming Bio-Active range, born from the alchemy between powerful natural ingredients and pharmaceutical innovations.

Adopt this range, an alliance of naturalness and efficiency, which adapts to each slimming need and meet the expectations of all figures. Day after day, the skin is firmer, leaving a refined silhouette.



# STIMULATE

## EXFOLIANT TONIC

Exfoliating Tonic  
*Stimulating scrub*

First step of slimming program, it stimulates and prepares the skin. It combines natural exfoliants with a cocktail of active drainage ingredients.

*Bamboo marrow, Almond, Horse Chestnut\*, Pine\*, Meadow-Sweet\**

\* Ingredients from organic farming

# SLIM

## GEL DOUBLE ACTION Caféine & Pepper

Dual-Action Caffeine & Pepper Gel  
*Slimming booster - Slims the figure*

The Dual-Action Caffeine & Pepper Gel is a genuine slimming booster from the Phyt's Slimming Bio-Active range. The synergy of Caffeine and Pink Pepper Oil, combined with massage, for a proven combined destocking and fat burning action.

*Natural Caffeine, Pink Pepper, Red Vine\**



## PROVEN EFFICIENCY

-1,2 cm cm in thigh circumference in 28 days<sup>(12)</sup>

(12) In vivo clinical test - Average result obtained for 7 people (average result for a panel of 20 people : - 0.6 cm) when applied twice a day after massaging with an exfoliation glove for 28 days.



# DESTOCK

## CHRONO STIMULATEUR

### Chrono Stimulator

*Firming booster - Daily and nightly action*

Thanks to its two main chronobiological active ingredients, combined with massage, it stimulates the destocking of fat in the morning and prevents it being stocked during the night. The skin is firmer.

*Papaya\*, Coralline Seaweed, Vitamin E*

# LOOK AFTER

## ESTETIC FORM

### Body Slimmer

*Toning*

Combined with massage, it helps to maintain the skin after weight loss. The skin is toned.

*Cedar\*, Cypress\*, Sage\**



## DERMYL III

### Stretch Marks Fighter

*Targets stretch marks / Tones*

Rich in nourishing vegetable oils. Ideal for preventing slackening and reinforcing skin elasticity. Recommended during slimming programs. It offers elasticity, suppleness and comfort.

*Niaouli\*, Sesame\*, Wheat Germ, Rosemary\*, Lemon\**



## BOOSTER MINCEUR

### Booster Slenderizing

*Food supplement*

Green Tea stimulates the breakdown of lipids and contributes to oxidising fats, while Guarana helps to combat excess weight.

*Green Tea, Guarana*

## SATIÉTÉ

### Satiety

*Food supplement*

Owing to the presence of Desert Indianwheat, it contributes to digestion and helps to maintain healthy intestines. Facilitates intestinal transit.

*Ispaghul, L-5-HTP from Griffonia Simplicifolia*

## VENTRE PLAT

### Flat Stomach

*Food supplement*

The Charcoal contained in the formula favours digestive comfort.

*Activated vegetal Charcoal, Green Clay*

## FERMETÉ MINCEUR

### Firming and Slimming

*Food supplement*

Extract of Garcinia cambodgia

Chromium

HCA



# SILHOUETTE

Offer your body a quintessence of plants



Nature is a source of inexhaustible wealth... PHYT'S extracts the most precious active ingredients from Nature to create products which are real synergies of plant oils and essentials, that pamper each silhouette.

For gentle breast care, light and tonic legs, velvety skin or for a moment of pure relaxation, discover these phyto-complexes with their many virtues, drawn from the heart of Nature.

## THE LEGS

### TONI JAMBES

#### Light Legs Gel

*Light and toning leg care*

This fresh milk soothes legs. Its decongestant active ingredients have a toning action for lighter legs.

*Centella\*, Menthol\*, Red Vine\*, Blackcurrant\**

### PHYTO-FLUIDE GLACIAL

#### Soothing Legs Fluid

*Fresh spray for light legs*

This fluid provides a sense of relief to legs. The camphor and menthol refresh and improve tone and microcirculation.

*Menthol\*, Horse Chestnut\*, Red Vine\*,  
Natural Camphor*



\* Ingredients from organic farming

# THE BUST



## SÉRUM BUSTE 32

Bust Serum 32

*Elixir bust care*

With essential oils and nourishing, anti-aging plants, this serum is ideal for taking care of breasts and cleavage.

Wheat Germ, Natural Vitamin E, Cypress\*, Verbena\*



## CRÈME BUSTE 32

Bust Cream

*Cream Bust Care*

Gentle nourishing emulsion, completes the action of BUST SERUM 32 and maintains shapely breasts.

Hazelnut\*, Wheat Germ, Petit Grain\*, Lemongrass\*

# AROMA PHYT'S



## AROMA PHYT'S RELAXANT

Relaxing Aroma Phyt's

*Phyto-Complex Relaxation*

The anti-stress and the calming properties of lavender essential oil make Aroma Phyt's Relaxant the ideal medium to any relaxation massage.

Eucalyptus\*, Lavander\*, Pine\*

## AROMA PHYT'S COCOON

Aroma Phyt's Cocoon

*Phyto-Complex Softness*

The healing, nourishing properties of Grape Seeds and Sunflower oil envelop the skin in a feeling of fabulous softness that cannot be found anywhere else.

Grape Seeds\*, Fucus





## AROMA PHYT'S TONIFIANT

### Tonifying Aroma Phyt's

#### *Stimulating Phyto-Complex*

---

The synergy of Lemon, Rosemary, Parsley and Sage essential oils, combined with massage, tones and stimulates the skin.

Lemon\*, Sage\*, Rosemary\*, Cinnamon\*



## AROMA PHYT'S JAMBES LÉGÈRES

### Aroma Phyt's Light Legs

#### *Tonifying Body Oil*

---

Pine and cinnamon join forces to give legs a newfound feeling of lightness.

Pine\*, Cinnamon\*, Rosemary\*, Clove\*



# OPTIDRAINE

---

## EMONCTYL

### *Food supplement*

---

Optidraine with 8 organic plants  
Rosemary, Dandelion, Black Radish, Blackcurrant, Marigold,  
Meadow-Sweet, Thyme, Bark of Lime



## EMONCTYL +

### *Food supplement*

---

Optidraine Plus  
Magnesium Chloride from seaweed and Pure fresh Lemon  
juice

## EMONCTYL H

### *Food supplement*

---

Optidraine H with 3 organic plants  
Black Radish, Carrot, Red Beet

## EMONCTYL U

### *Food supplement*

---

Optidraine U with 3 organic plants  
Fennel, Dandelion, Meadow-Sweet



# CAPILLARY CARE

Let Nature take care of your hair



Too often mistreated by our daily life: frequent washing, silicone treatments, artificial coloring, high temperature hair drying... our hair rebels showing signs of : dandruff, abnormal hair loss, excessively oiliness or dryness. Your hair does not need chemistry, Nature's alchemy is enough !

## SHAMPOOING

### Shampoo

#### Capillary Cleanser

Revives the radiance and silkiness of hair. It gently cleanses all types of hair and preserves hair and scalp.

Orange\*, Blackcurrant\*, Niaouli\*, Juniper\*

## MASQUE CAPILLAIRE

### Hair Mask

#### Nourishing - Protecting

A nutrition bath for your hair, it nourishes and protects. The hair is strengthened, soft and shiny over its entire length.

Gleditschia, Shea Butter\*, Cider Vinegar\*, Mongongo



\* Ingredients from organic farming



### DEMEL +

#### Smoothing

#### Detangling conditioner

Smooths and protects hair, which feels softer, easier to style and shinier.

Gleditschia, Jojoba Ester\*, Orange\*



### HUILE VIVIFIANTE

#### Revitalizing Oil

#### Nourishing

Revitalizes the scalp before shampoo. Hair is strong, silky and supple.

Hemp, Rosemary\*, Cypress\*, Parsley, Pine\*

## LOTION STIMULANTE

### Stimulating Lotion

#### Strength - Beauty

Stimulates the scalp and the hair bulb. The hair is stronger, thicker, soft and shiny.

Wheat proteins, Lucerne\*, Bilberry\*, Blackcurrant\*, Copper, Cinnamon\*



## PHANÈRES

### Appendages

#### Food supplement

Vitamins B3, B5, B6, B8, B9, B12

Cystin, Méthionin, Zinc, Vitamins C and E, Nettle, Selenium



# SUN CARE

Take your clothes off,  
Nature will protect you !



The sun is a real necessity for our organism. Good for the spirit and good for your skin ... but in small doses. To safely enjoy its benefits, Phyt's designed the Phyt'Solaire line to look after the skin before, during and after exposure. Lightly textures, with exotic scents, non-allergenic mineral sunscreen protectors, totally preservative-free, these products are suitable for skin complexions and offer an effective protection for a luminous tan and with maximum respect for the skin. Enriched with nourishing natural ingredients and antioxidants, they help your skin maintain its youthfulness.

With Phyt'Solaire lets yourself tan and enjoy the sun safely.

---

# PROTECT

---

## LAIT FONDANT SPF10

### Milky Cream SPF 10

*Protection UVB 10 - UVA*

---

Free of chemical filters. A fluid and light lotion to protect your skin while tanning ! Its non-sticky texture is quickly absorbed for maximum comfort. Enriched with botanical anti-ageing vitamin E and nourishing active ingredients, the skin looks sublime.

*Mineral sunscreen protectors of natural origin, Sesame\*, Argan\*, Natural Vitamin E, Hydrolate of Mint\**



\* Ingredients from organic farming



## CRÈME PROTECTRICE SPF30

### High Protection Cream SPF 30

*Protection UVB 30 - UVA*

---

Especially made to put face and sensitive zones under high protection. Its plus : a fluid texture, invisible after application, rich in anti ageing vegetal vitamin E and in nourishing and protective actives.

*Mineral sunscreen protectors of natural origin, Shea Butter\*, Argan\*, Natural Vitamin E, Ylang-Ylang\**

## FLUIDE PROTECTEUR SPF50

### High Protection Fluid SPF 50

*Protection UVB 50 - UVA*

---

Especially made to place the lightest complexions under high protection. Its plus : a fluid texture, invisible after application, rich in anti ageing vegetal vitamin E and in nourishing and protective actives ingredients.

*Mineral sunscreen protectors of natural origin, Shea Butter\*, Sesame\*, Lavender\*, Natural Vitamin E*

Does not provide a 100% protection. Do not expose yourself too long and avoid exposure between 12:00 et 16:00. Overexposure to the sun is a serious threat to health.

# SUBLIMISE



## CRÈME APRÈS-SOLEIL

### After-Sun Cream

*Hydrating*

Makes the skin instantly fresh and comfortable.

*Calendula\**, *Shea Butter\**, *Jojoba\**, *Aloe Ferox*, *Natural Vitamin E*, *Mini\**

**+ 83%**

hydration 3 h after application <sup>(12)</sup>

## HUILE SOLAIRE YLANG

### Ylang Suntan Oil

*Nourishing care without sunscreen*

Natural tanning oil for already tanned skin. Your tan skin will be glowing, shining, unified and it will keep elasticity and softness.

*Wheat Germ*, *Ylang-Ylang\**, *Natural Vitamin E*, *Silicon*



(12) Clinical test performed on 10 women suffering from dry skins on their legs.

# VOILE DORÉ

## Self Tanning veil

*Self tanner*

Gradually adorns the skin with a natural and golden tan for an all-over, uniform result. The skin becomes radiant and remains soft and supple thanks to its nourishing active ingredients.

Sesame\*, Carrot, DHA, Erythrolucose



\* Ingrédients issus de l'Agriculture Biologique



## BRONZORAL 1

*Food supplement*

Beta-carotene from natural sources  
Naturals Vitamins C and E  
Polyphenols  
Selenium

## BRONZORAL 2

*Food supplement*

Rich in polyunsaturated fatty acids :  
Omega 3 and 6  
Natural Vitamin E



# PHYT'S MEN

For a cuddle-up that won't scratch !





Very different from that of women, men's skin requires specific care that adapts to its physiology and needs. Light textures which penetrate instantly, refreshing scents, muscled-up synergies of efficient, proven, natural ingredients... the Phyt's Men product range was created and specifically tailored for men's skin.

Let yourself be seductive by invigorating Ginseng, stimulating Mint, Bamboo Scrub, soothing Aloe Ferox... and above all, by who you are, a Phyt's Man !

---

# SHAVE

---

## CRÈME À RASER

### Shaving Cream

#### *Shaving comfort*

---

Light and creamy, it prevents irritation by improving razor glides. Enriched with Palm oil, Hemp oil and Sunflower oil, the skin is nourished and protected.

*Aloe Ferox, Ginseng\*, Petit Grain\*, Tea Tree\**

## FLUIDE HYDRATANT APRÈS-RASAGE

### After-Shave Moisturizing Care

#### *Hydrating Care*

---

Rich in Nigella oil and Bitter orange essential oil both. It soothes razor burn and soothes tight skin. Non-greasy fluid, which leaves the skin moisturised, supple and protected.

*Nigella\*, Ginseng\*, Aloe Ferox, Petit Grain\**



## EAU PARFUMÉE

### Scented After-Shave Lotion

#### *Toning Mist*

---

A discreet and relaxing perfume of citrus fruit with a light aromatic thrill... EAU PARFUMÉE APRÈS-RASAGE gives you an immediate feeling of freshness and vitality.

*Grapefruit\*, Juniper Berry\*, Patchouli\*, Sandalwood, Balsam Fir\**

# CLEANSE

## GEL NETTOYANT OXYGÉNANT

Oxygenating Cleansing Gel  
*Purifying - Energizing*

Extremely gentle, it cleanses the skin without drying it. Thanks to Mint and Ginseng, fresh and revitalising, the skin rediscovers radiance and firmness. A guaranteed boost!

*Mint\*, Ginseng\*, Tea Tree\*, Geranium\**



## GEL NETTOYANT DÉSINCRUSTANT

Exfoliating Cleansing Gel  
*Exfoliating - Cleansing*

This fresh gel eliminates impurities and limits the appearance of ingrown hair thanks to exfoliating extract of Bamboo. The skin is left clean and radiant.

*Mint\*, Ginseng\*, Extract of Bamboo marrow, Tea Tree\**



# MAINTAIN

## SOIN ANTI-RIDES

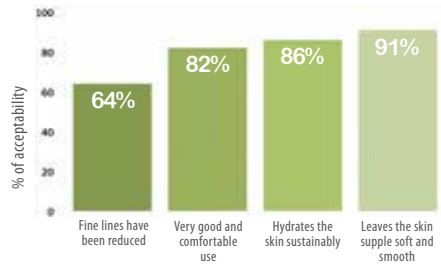
Anti-Wrinkle Care

*Regenerates - Smooths*

This fresh and non-greasy fluid calms the first signs of ageing. Thanks to its organic active ingredients 100% of natural origin, wrinkles and small lines are smoothed. The skin is firmer, moisturised and radiant.

*Aloe Ferrox, Tocopherol, Shea Butter\*, Hazelnut\*, Nigella\**

Evaluation of the care acceptability after a 28-day application



Satisfaction test performed among 22 men. 2 applications per day for 28 days

## SOIN MATIFIANT

Matifying Care

*Equilibrating - Purifying*

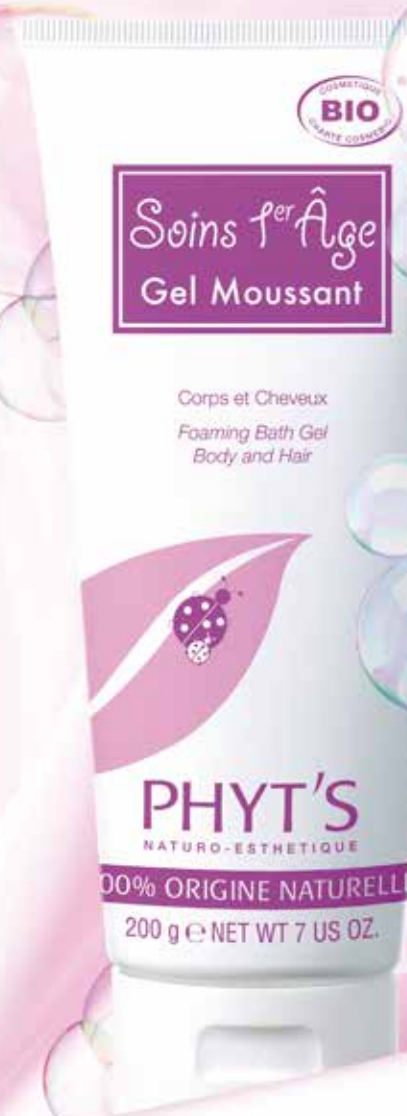
Extremely light and non-greasy, this treatment matifies and purifies the skin. Rich in Tea TREE, Palmarosa and Thyme essential oils, this formula, which is ideal for oily skin with imperfections, smoothes the skin's texture for a more radiant complexion.

*Tea Tree\*, Thyme\*, Cinnamon\*, Ginseng\**



# BABY CARES

Nature thrives without chemical products.  
So does baby !



Sensitive to the increase in skin problems among newborn babies and on the strength of its experience, PHYT'S Laboratories has committed to mothers by offering a range of specific pure, certified Organic, products for newborns, exclusively from nature and tested under paediatric control.

For the hygiene and equilibrium of Baby, the Newborn range is designed as much for everyday use as for specific treatments and baby's well-being !

## GEL MOUSSANT

### Foaming Gel

*2-in-1 ultra gentle cleansing gel*

---

Ultra gentle, formulated especially to cleanse baby's hair and skin.  
*Lavander\**, *Palmarosa\**, *Petit Grain\**

## LAIT DE TOILETTE

### Cleansing Milk

*Cleanses - Protects*

---

Guarantees effective and gentle hygiene and protection.  
*Centella\**, *Calendula\**, *Petit Grain\**



## CHANGE CONFORT

### Comfort Change

*Specific treatment cream*

---

Protects and soothes baby's bottom. Offers the skin softness.

*Petit Grain\**, *Shea butter\**, *Lavander\**, *Hemp\**



## TENDRE MASSAGE

### Tender Massage

*Aromatic oily gel*

---

Offers baby well-being and relaxation and softens the skin.  
*Petit Grain\**, *Jojoba\**, *Hemp\**



---

# Professional Facial Treatments

---



## Moisturizing Treatment

### Treatment Aqua Phyt's

Rehydrates and refreshes the skin

Normal to combination skin  
Dry skin

Hyaluronic Acid  
from plants

## Oxygenating Treatment

### Vital Energy Treatment

Revitalises, boosts radiance,  
maintains the skin's youth capital

Dull, tired and  
stressed skin

Plant Chlorophyll,  
Pink Pepper, Seaweed,  
Plankton

## Anti-aging Treatment

### Treatment O

Anti-ageing, equilibrating

Mature skin with  
an oily tendency

Wheat Germ, Geranium,  
natural Vitamin E

### Vital Trace-Element Treatment

Anti-ageing, nourishing

Mature skin with  
a dry tendency

Wheat Germ, Collagen,  
natural Vitamin E

### Multi-Vita Treatment

Targets wrinkles, tightening effect

All types of  
mature skin

Cévéblé®,  
Lemongrass, natural  
Vitamin E

## Balancing Treatment

### Balancing Treatment

Targets seborrhea and boosts

All skin types

Lemon, Petit Grain

### Anti-Comedones Treatment

Purifies and removes  
imperfections

Oily Skin,  
Skin Imperfections

Copper,  
Natural Camphor

### Capyl Treatment

Soothes and targets redness

Skin prone to redness

Indian Chestnut,  
Centella Asiatica

## Lightening Treatment

### White Bio-Active Treatment

Illuminates, unifies and targets  
brown spots

Dull skin, pigmentary  
disorders, mature skin

Complex PWE®,  
Acerola

## Skin Renovation Treatment

### Chemical Peel Treatment

Improve skin condition

Dull skin, tired, wrinkled,  
with skin irregularities

Glycolic acid 30%  
from natural origin

## Eye Contour Treatment

### Phyt'Sublim Eyes Treatment

Reduces dark circles\* and eye  
bags\*, decongests\* and hydrates\*

All skin types

Phyto-Actif Regard  
complex

## Nourishing Treatment

### Phyt'ssima Treatment

Nourishes, soothes

Dry to very dry skin

Argan, Hemp

## Phyt's Men's Treatment

### Instant Radiance Treatment

Purifies, balances and revitalizes

Men's skin

Aloe Ferox,  
Ginseng, Mint

\* By simultaneously associating retail products from the corresponding ranges



---

Professional  
Body Treatments

---



# Bio-Active Slimming Program

---

## Objective Weight Loss

---

### **Bio-Active Slimming Treatment**

*Stimulates destocking and centimetric loss\*\**

**All morphologies**

*Natural Caffeine, Pink Pepper, Cinnamon*

---

## Objective Firmness

---

### **Bio-Sculptor Treatment**

*Firming\*\* for a sculpted and toned body*

**All morphologies**

*Natural Caffeine, Papaya, Coralline Seaweed*

---

## Targeted Body Treatment

---

### **Satin Body Scrub**

*Frees the skin of dead cells, smoothes and nourishes*

*Sea Salt, Shea Butter*

### **Rebalancing Back Treatment**

*Balances, targets imperfections and relaxes*

*Camphor, Lemon*

### **Bust Treatment**

*Maintains the curve, tones, nourishes and softens*

*Wheat Germ, Niaouli*

### **Light Leg Treatment**

*Stimulates, tones and revitalizes legs*

*Red Vine, Menthol and Camphor*

### **Velvety Hand Treatment**

*Protects, sublimes hands epidermis*

*Castor oil, Argan, Jojoba*

### **Gentle Foot Treatment**

*Nourishes, repairs, beautifies and relaxes*

*Apricot, Beeswax*

### **Lympho-dynamics Treatment**

*Stimulates elimination, tones and relaxes*

*Cedar, Cypress*

### **Digito Energy Treatment**

*Stimulates elimination and relaxes*

*Cassis, Meadow-Sweet*

\*\* In association with Gel Double Action Caffeine & Pepper and Chrono Stimulateur



**PHYT'S**  
ORGANIC MAKE-UP

# Naturally Glamorous

Discover our range  
Phyt's Organic Make-Up.

The first line of make-up  
fully certified organic.



BEAUTY SALON STAMP

## Laboratoires PHYT'S

La Bouygue - 46140 Caillac - France  
Tél : +33 (0)5 65 20 00 45 - Fax : +33 (0)5 65 21 14 91

[www.phyts.com](http://www.phyts.com)